

Jackson's Pointe Lot 11

JACKSON'S POINTE - LOT 11

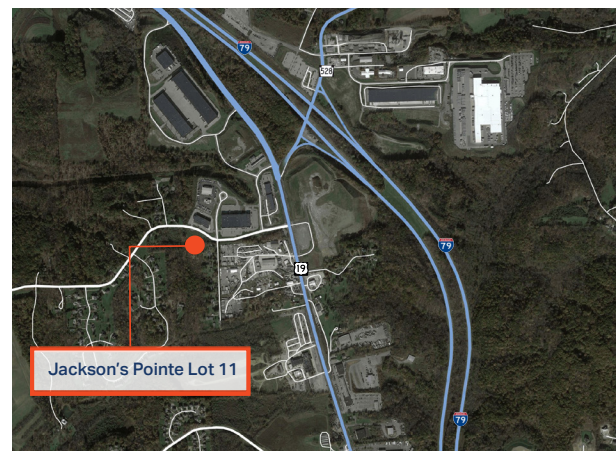
ZEHNER SCHOOL ROAD, ZELIENOPLE, PA

Jackson's Pointe is a newly developed park located in Butler County off the Evans City / SR 528 exit of I-79. This new and desirable park provides for office, retail, distribution, flex, technology, and light manufacturing with direct access to Route 19/Perry Highway. Also located minutes from Cranberry Township and historical downtown Zelienople.

Available Acreage: 2.05 acres - 89,237 SF

- Pad ready site
- Serviced by a signalized intersection
- High visibility from all directions

VACANT LAND & BUILD-TO-SUIT OPPORTUNITY



For More Information or to Schedule a Tour Please Contact:

Gregg Broujos
gbroujos@buncher.com

Michael Kutzer
mkutzer@buncher.com

Jesse Ramey
jramey@buncher.com

One Waterfront Place
1251 Waterfront Place
Suite 201
Pittsburgh, PA 15222
412.422.9900



- Directly off Evans City exit of I-79
- 10 minutes to PA Turnpike (PA-76)
- 30 minutes to Downtown Pittsburgh
- 5 minutes to Cranberry Township
- Located minutes from historic Downtown Zelienople



Total Businesses:
4,710